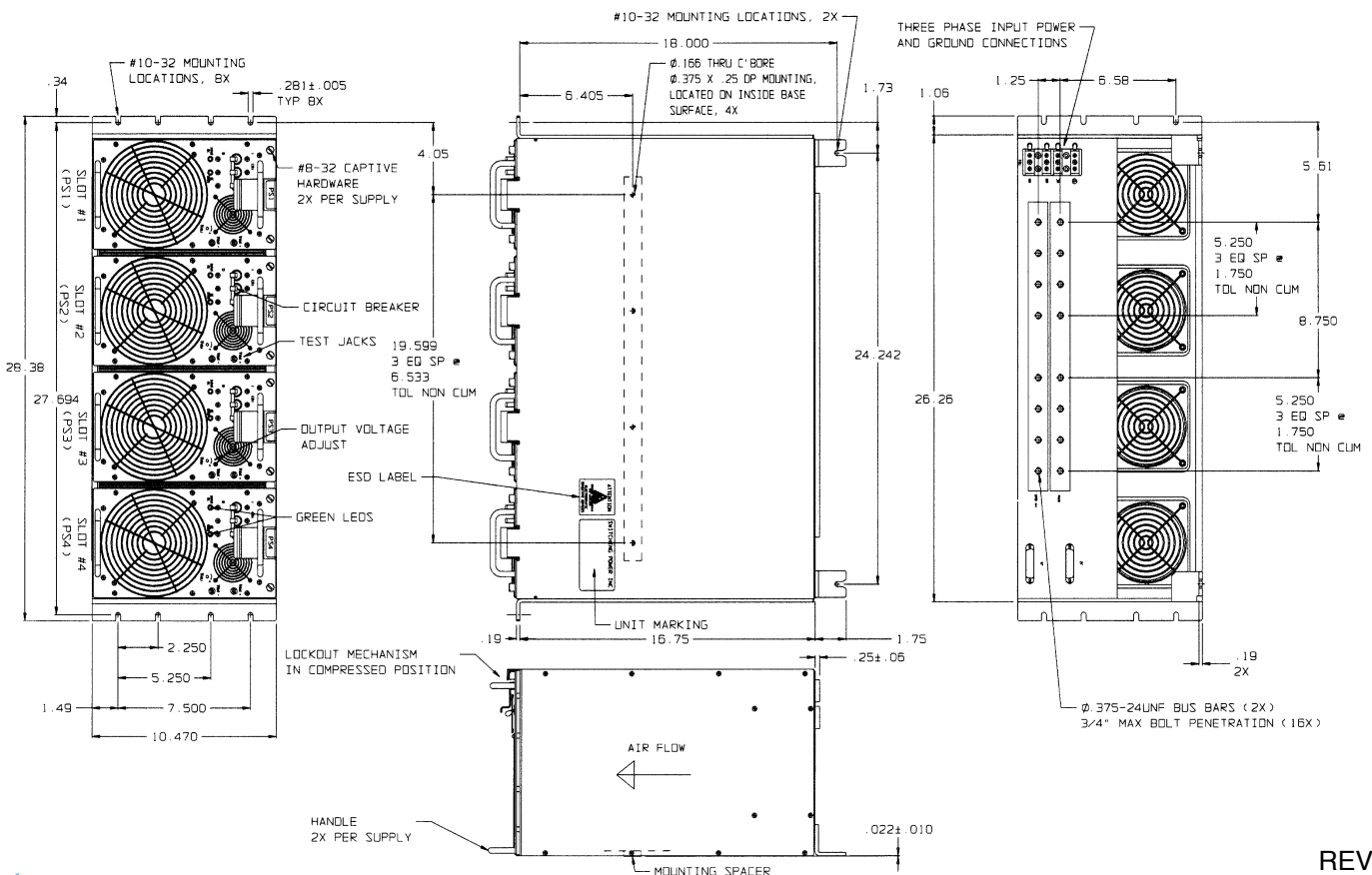


# HOT SWAP RACK MODEL NOC-20000-RK



- ◆ 20,000 WATT HOT SWAP RACK SYSTEM USING FOUR NOC-6500 MODULES
- ◆ RACK MOUNTABLE
- ◆ POWER FACTOR CORRECTED INPUT, 187-264VAC THREE PHASE INPUT
- ◆ OPERATION UP TO 15,000 Ft / 65°C AMBIENT - Consult Factory
- ◆ LEDS INCLUDED INDICATE INDIVIDUAL POWER SUPPLY STATUS
- ◆ N+1 REDUNDANCY PROVIDED WITH INTEGRAL "ORING" DIODES
- ◆ EASY INPUT / OUTPUT CONNECTIONS PROVIDED



REV: -