

TR-350

LOW PROFILE -350 WATTS

ONE TO FOUR OUTPUTS - POWER FACTOR CORRECTED 90-264 VAC



FEATURES:

- Low Profile 1.85" x 4.8" x 8.0" in Size
- One to Four outputs
- Meets EN55022 Level A / FCC Class A
- No Additional Cooling Required up to 50 °C
- Power Factor Corrected Input (90-264VAC)
- Active Current Share Capability
- Remote Sense On V1 Output
- Greater than 150,000 Hrs MTBF



	OUTPUT VOLTAGE (VDC)	OUTPUT AMPERS (MAX)	OUTPUT POWER (WATTS)
V1	2 to 48	50	350
V2	10 to 24	8/12pk	100
V3	5 to 24	4	60
V4	5 to 24	5	60

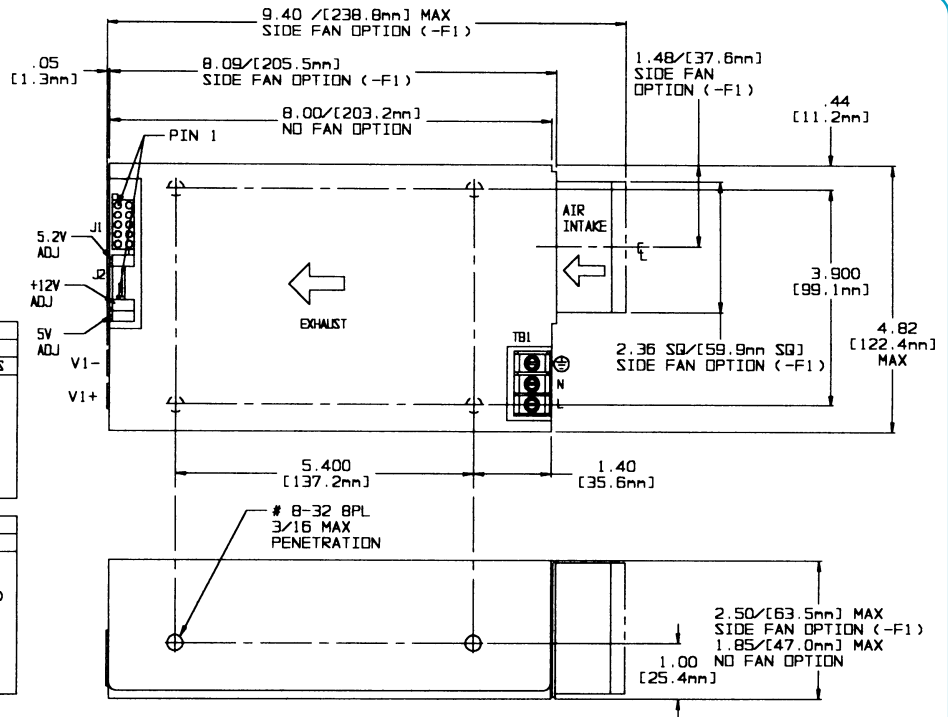
TR-350 SERIES 350 WATT COMPACT SIZE

*IN PDF FORMAT,
PRINT OR ZOOM
TO SEE DRAWING

AC INPUT (90-264 VAC CONTINUOUS RANGE)			
FUNCTION	115 VAC	230 VAC	CONNECTOR
TBI-(L)	LINE	LINE 1	BARRIER STRIP #6-32 SCREWS .325" CENTERS
TBI-(N)	NEUTRAL	LINE 2	
TBI-(GND)	SAFETY GROUND	SAFETY GROUND	

DC OUTPUTS			
FUNCTION	DESCRIPTION	LOCATION	CONNECTOR
OUTPUT#1	+5V/50A	MAIN OUTPUT	BUS BARS #6-32 SCREWS
OUTPUT#2	+12V/8A 12Apk RTN (COMMON)	J1-1, 6 J1-2, 7	AMP #770743-1 MATES WITH CONN #770580-1 WITH SOCKETS #171838-1 (ANG #20 TO #18)
OUTPUT#3	-12V/4A	J1-3, 8	
OUTPUT#4	+5.2V/5A	J1-4, 9 (+) FLOATING OUTPUT	
	-5.2V/5A	J1-5, 10 (-) FLOATING OUTPUT	

STATUS AND CONTROL			
FUNCTION	LOCATION	NOTES	CONNECTOR
REMOTE SENSE	J2-1	OUTPUT #1 SENSE	AMP MTA TYPE #640458-6 PIN HEADER (LOCKING)
	J2-2	OUTPUT #1 SENSE RTN	
DC POWER GOOD INHIBIT	J2-3	REFERENCE TO COMMON	
	J2-5		
CURRENT SHARE	J2-6		
AC POWER FAIL	J2-4	REF TO COMMON	



Nominal Input Voltage	115-240 VAC.
Frequency	47-63 Hz , 400Hz. available.
Operational Input Voltage Range	90-264 VAC Power Factor 0.99 Typical at Full Load. Meets EN 61000-3-2.
Inrush Current	Less than 4 msec. 30 amperes @ 115 VAC or 60 amperes @ 230 VAC.
Brownout Protection:	Holds Regulation to 85 Vac.
Fusing	7 Ampere, 250 VAC, Internal ceramic body fuse.
Hold up time	20msec minimum after loss of AC Input at full load and nominal input
Efficiency	75% typical
Turn on time	Less than 1 sec.
Line and Load Regulation	All outputs hold 1% over AC input range and 0 to 100% load. Output #3 requires 5% minimum load on outputs #1 or #2.
Adjustability	Outputs #1 and #2 adjustable \pm 5% minimum. Output #3 fixed. Output #4 adjustable \pm 5% minimum or +5% only if voltage is 5.2V.
Ripple & Noise	1% PARD or 100mv which ever is greater. 20MHz bandwidth.
Transient Response	Output maximum excursion of \pm 5% for 50% load step. Recovery less than 500 μ sec.
Short Circuit and Overload Protection	All outputs are protected from short circuit and overload. Automatic recovery.
Overshoot	No turn-on or turn-off overshoot.
Output Isolation	Isolated from ground 50 Vdc.
Peak Output Current	Peak current can be delivered for a maximum period of 30 seconds.

Reverse Voltage	Protected against reverse voltage to supply current rating.
Overvoltage Protection	Shutdown at 130% of nominal Vout (V1-V3). V4 failsafe design. Recycle input power to reset.
Overtemperature Protection	Unit shuts down if overheated. AC must be recycled.
Cooling	-F1 models equipped with Integral fan, up to 50°C Ambient full power. Models without -F1 fans, user provides min. 30 CFM.
Input/Output Isolation	4242 VDC, SELV construction.
Remote Sense (V1 output)	Up to 0.5 volts total in load. Open Sense Lead Protection
Remote On/Off	Open to Run, Contact closure to return , turns off all outputs.
Power Fail	Provides TTL "0" 5ms before output voltage goes out of regulation band upon loss of AC power.
DC Power Good	Provides TTL "1" open collector when output #1 is above 4.6V (for 5V nominal output).
Operating Temperature	-20°C to 50°C full output.
Stability	All outputs 0.1% for 8 hrs. after 30 minute warm-up.
Humidity	Up to 95% non-condensing.
Size	1.85"x 4.8"x 8.0" Weight: 4.5 lbs.
EMI	Meets FCC Class A and EN55022 Level A
Safety	UL 1950, CSA C22.2 No. 950, EN60950.

SERIES BREAKDOWN: TR-350X1-P-(F1)
where X1= S for Single output, D for Dual output, T for Triple output or Q for Quad output
Leave off the -(F1) if the user will provide cooling.

REV: -