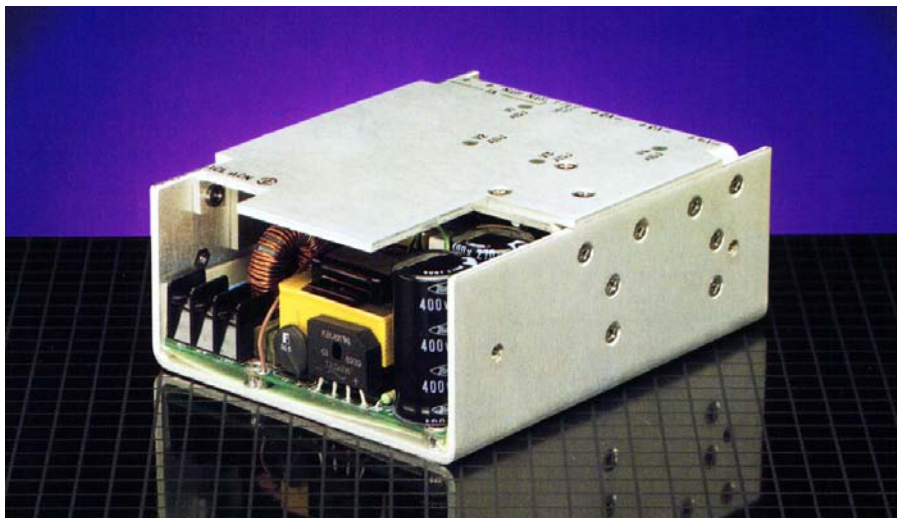


OFSX-100U SERIES

150 WATT **UNIVERSAL INPUT -90 to 264 VOLTS**

ONE TO FOUR OUTPUTS



HIGH RELIABILITY GREATER THAN 90,000 HRS. MTBF



FEATURES:

- 100 KHz Operation
- Sizes 4.8" x 2.44" x 6"
- 80% Efficiency Typical
- Meets FCC Class A
- Isolated Outputs
- Current Share
- Universal Input 90-264 VAC

TYPICAL MODELS AND THEIR OUTPUT RATINGS:				
MODEL NO.	V1	V2	V3	V4
OFSX-100T-U	5/20A	12/2A	-12/2A	
OFSX-100T-U	5/20A	-5/4A	-12/2A	
OFSX-100Q-U	5/20A	12/4A	12/1A	-5/1A
OFSX-100D-U	5/15A	12/4A		

or configure your own output requirements from the chart below:

	OUTPUT VOLTAGE (VDC)	OUTPUT AMPERS (MAX)	OUTPUT POWER (WATTS)
V1	2 to 48	30	150
V2	5 to 24	4	60
V3	5 to 24	4	60
V4	-5	1	5

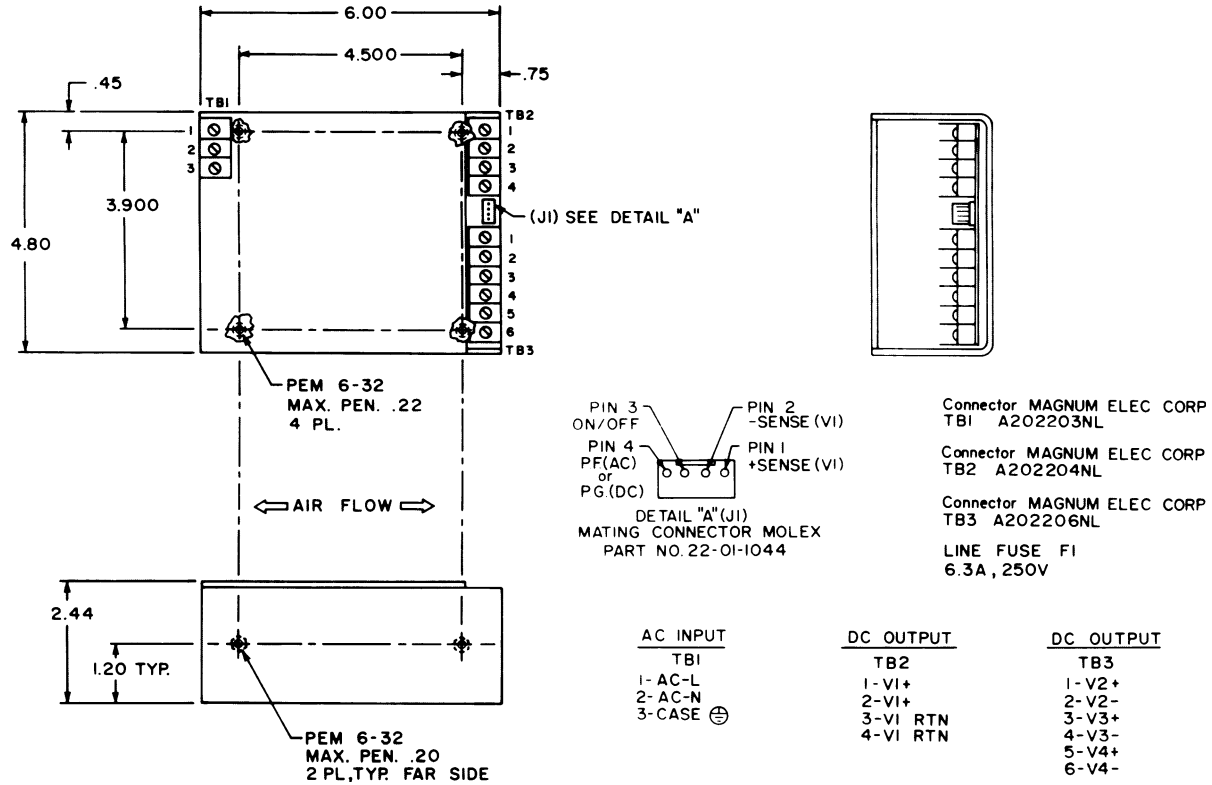


3601 VETERANS HIGHWAY
 RONKONKOMA, NEW YORK 11779
 TEL (631) 981-7231 FAX (631) 981-7266

VISIT US ON THE WEB:
<http://www.switchpwr.com>

OFSX-100 SERIES

150 WATT COMPACT SIZE



<p>Nominal Input Voltage 115-240 VAC.</p> <p>Frequency 47-63 Hz 400Hz. available.</p> <p>Operational Input Voltage Range 90 to 264 VAC</p> <p>Inrush Current Less than 4 msec 40 amperes @ 115 VAC, or 80 amperes @ 230 VAC.</p> <p>Fusing 6.3 Ampere, 250 VAC, Internal ceramic body fuse.</p> <p>Efficiency 80% typical.</p> <p>Turn on time Less than 500 msec.</p> <p>Load Regulation 1% for 10% to 100% load changes, all outputs. 10% min. load required on V1 for max load reg. on outputs V2 to V4.</p> <p>Line Regulation ± 0.5% over operating line range, all outputs.</p> <p>Ripple & Noise 1% ripple, 1% noise or 100MV which ever is greater. 20MHz bandwidth.</p> <p>Transient Response Output maximum excursion of ± 5% for 25% load step. Recovery less than 500 µsec.</p> <p>Short Circuit and Overload Protection All outputs are protected from short circuit and overload. Automatic recovery.</p> <p>Overshoot No turn-on or turn-off overshoot.</p>	<p>Overvoltage Protection V1 voltage clamp factory set at 20% to 30% above output voltage. V2, V3, V4 failsafe design.</p> <p>Overtemperature Protection Unit shuts down if overheated. Automatic recovery.</p> <p>Cooling User provides min. 30CFM.</p> <p>Input/Output Isolation 4242 VDC, SELV construction.</p> <p>Remote Sense V1 Output Up to 0.5 volts total in load.</p> <p>Remote On/Off Standard - Closed to run.</p> <p>Power Good or Power Fail Standard - Norm logic "1".</p> <p>Operating Temperature -20°C to 50°C full output. 50°C to 75°C, derate 2%/°C.</p> <p>Stability All outputs 0.5% for 8 hrs. after 1 hour warm-up.</p> <p>Humidity Up to 95% non-condensing.</p> <p>EMI Meets FCC Class A</p> <p>Size 4.8" by 2.44" x 6".</p> <p>Weight 4 lbs.</p> <p>Safety UL 1950, CSA 234, EN60950.</p>	<p>V1 voltage clamp factory set at 20% to 30% above output voltage. V2, V3, V4 failsafe design.</p> <p>Unit shuts down if overheated. Automatic recovery.</p> <p>User provides min. 30CFM.</p> <p>4242 VDC, SELV construction.</p> <p>Up to 0.5 volts total in load.</p> <p>Standard - Closed to run.</p> <p>Standard - Norm logic "1".</p> <p>-20°C to 50°C full output. 50°C to 75°C, derate 2%/°C.</p> <p>All outputs 0.5% for 8 hrs. after 1 hour warm-up.</p> <p>Up to 95% non-condensing.</p> <p>Meets FCC Class A</p> <p>4.8" by 2.44" x 6".</p> <p>4 lbs.</p> <p>UL 1950, CSA 234, EN60950.</p>
---	--	---

SERIES BREAKDOWN: **OFSX-100S-U ONE OUTPUT** **OFSX-100T-U THREE OUTPUT**
 OFSX-100D-U TWO OUTPUT **OFSX-100Q-U FOUR OUTPUT**

EXAMPLE: **OFSX-100Q-U; FOUR OUTPUT**
SPECIFY OUTPUT VOLTAGES, CURRENTS AND OTHER OPTIONS.