

HSPF SERIES

2000 WATTS
ONE TO FOUR OUTPUTS

POWER FACTOR CORRECTED
EN60555-2 COMPLIANT

MADE IN THE U.S.A.

VISIT US ON THE WEB AT <http://www.switchpwr.com>



HIGH RELIABILITY GREATER THAN 90,000 HRS. MTBF



FEATURES:

- Power Factor Corrected 0.99
- EN60555-2 Compliant
- 75% Efficiency Typical
- Meets EN55022 Level A / FCC Class A
- Isolated Outputs
- Current Share

TYPICAL MODELS AND THEIR OUTPUT RATINGS:				
MODEL NO.	V1	V2	V3	V4
HSTPF-5HC-12HHC-12M-U	5/350A	12/30A	12/10A	
HSQPF-5HC-5HHC-12M-12L-U	5/300A	5/40A	12/10A	12/4A
HSDPF-5HC-12HHC-U	5/350A	12/30A		
HSQPF-5HC-24HHC-12M-12L-U	5/300A	24/15A	12/10A	12/2A

or configure your own output requirements from the chart below:

	OUTPUT VOLTAGE (VDC)	OUTPUT AMPERS (MAX)	OUTPUT POWER (WATTS)
V1	2 to 48	350	1750
V2	2 to 24	40	360
V3	2 to 24	10	120
V4	5 to 24	10	120

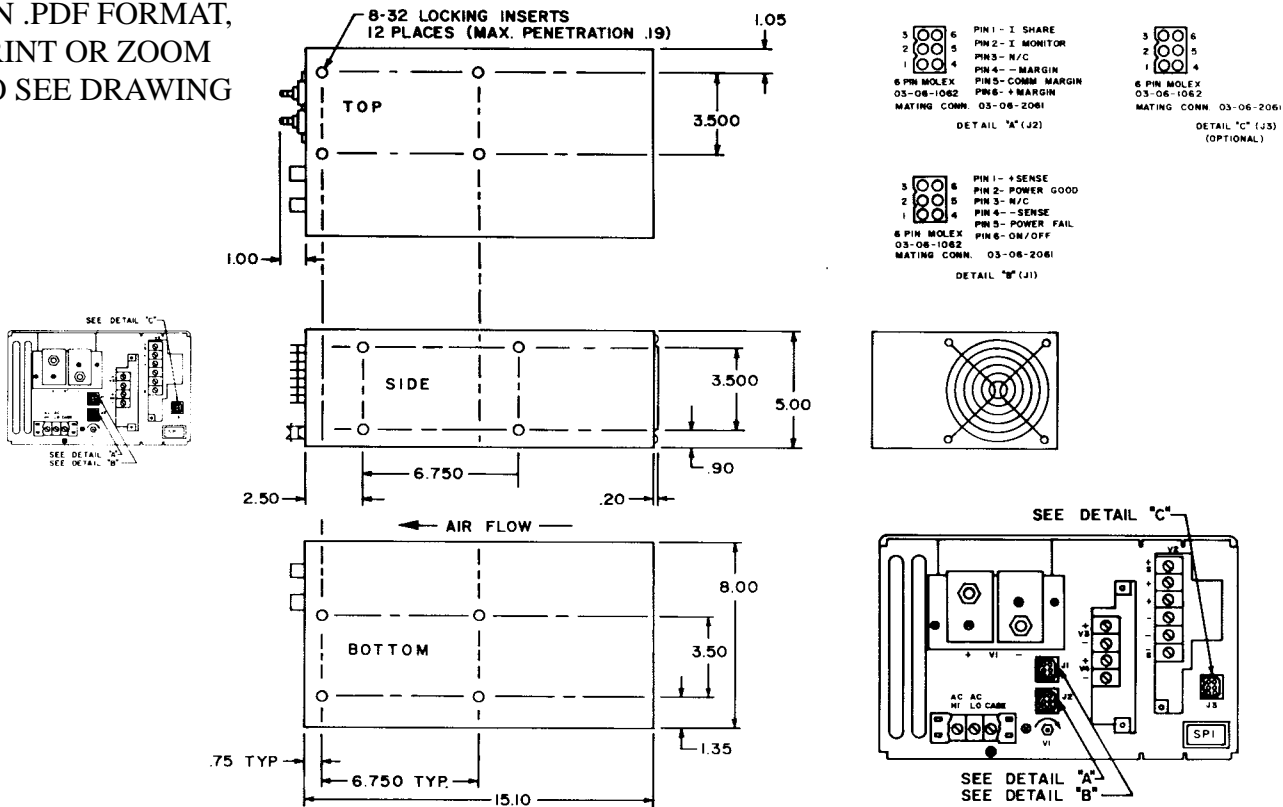
EAST COAST:
3601 VETERANS HIGHWAY
RONKONKOMA, NEW YORK 11779
TEL (516) 981-7231 FAX (516) 981-7266

WEST COAST:
599 N. MATHILDA AVENUE
SUNNYVALE, CALIFORNIA 94086
TEL (408) 732-1230 FAX (408) 732-5712



HSPF SERIES 2000 WATTS ONE TO FOUR OUTPUTS

*IN .PDF FORMAT,
PRINT OR ZOOM
TO SEE DRAWING



Nominal Input Voltage	220, 230 or 240 VAC.	Current Share and Current Monitor	V1 and V2 outputs.
Frequency	47-63 Hz 400Hz. available.	Overvoltage Protection	V1, V2 voltage clamp factory set at 20% to 30% above output voltage. V3, V4 failsafe design.
Operational Input Voltage Range	160 to 264 VAC up to 2000 watts.	Overtemperature Protection	Unit shuts down if overheated. Automatic recovery.
Inrush Current	Less than 4 msec. 160 amperes @ 230 VAC.	Cooling	Internal Fan provides cooling.
Fusing	20 Ampere, 250 VAC, Internal fibre body fuse.	Input/Output Isolation	4242 VDC, SELV construction.
Efficiency	75% typical.	Remote Sense V1, V2 Outputs	Up to 0.5 volts total in load.
Turn on time	Less than 1 sec.	Remote On/Off Power Good and Power Fail	Standard
Load Regulation	0.5% for 10% to 100% load changes, all outputs. 10% min. load required on V1 for max load reg. on outputs V3, V4.	Operating Temperature	-20°C to 50°C full output. 50°C to 75°C, derate 2%/°C.
Line Regulation	± 0.5% over AC operating range.	Stability	All outputs 0.5% for 8 hrs. after 1 hour warm-up.
Ripple & Noise	1% of output voltage, peak to peak.	Humidity	Up to 95% non-condensing.
Transient Response	Output maximum excursion of ± 5% for 25% load step. Recovery less than 500 µsec.	EMI	Meets FCC Class A and EN55022 Level A
Short Circuit and Overload Protection	All outputs are protected from short circuit and overload. Automatic recovery.	Size	5.0" by 8.0" x 15.1"
Overshoot	No turn-on or turn-off overshoot.	Weight	28 lbs.

SERIES BREAKDOWN: HSSPF ONE OUTPUT HSTPF THREE OUTPUT
HSDPF TWO OUTPUT HSQPF FOUR OUTPUT

THEN ADD: -X1HC WHERE X1 EQUALS THE OUTPUT VOLTAGE OF V1.
THEN ADD: -X1HHC WHERE X1 EQUALS THE OUTPUT VOLTAGE OF V2 IF THE CURRENT IS GREATER THAN 15A.
OR
-X1M WHERE X1 EQUALS THE OUTPUT VOLTAGE OF V3 IF THE CURRENT IS GREATER THAN 4A.
THEN ADD: -X1M WHERE X1 EQUALS THE OUTPUT VOLTAGE OF V4 IF THE CURRENT IS GREATER THAN 4A.
OR
-X1L WHERE X1 EQUALS THE OUTPUT VOLTAGE OF V4 IF THE CURRENT IS LESS THAN 5A.
THEN ADD: -U

EXAMPLE: HSTPF-5HC-12HHC-12M-U; THREE OUTPUT; V1 = 5/300A; V2 = 12/20A; V3=12/5A