

# GNX-600

## LOW PROFILE -600 WATTS

ONE TO FOUR OUTPUTS - POWER FACTOR CORRECTED 90-264 VAC

**40 AMP CAPABILITY ON V2 - 75 AMPS ON V1**



### FEATURES:

- Low Profile 2.5" x 5" x 11" in Size
- One to Four outputs
- Meets EN55022 Level A / FCC Class A
- No Additional Cooling Required up to 50 °C
- Power Factor Corrected Input (90-264VAC)
- Remote Sense On V1, V2 Outputs
- Greater than 150,000 Hrs MTBF
- Zero Wire Current Share on V1 & V2 Outputs



	OUTPUT VOLTAGE (VDC)	OUTPUT AMPERS (MAX)	OUTPUT POWER (WATTS)
V1	1.8 to 48	75	600
V2	1.8 to 24	40	200
V3	5 to 24	12/20pk	150
V4	5 to 24	4	75

# GNX-600 SERIES 600 WATT COMPACT SIZE

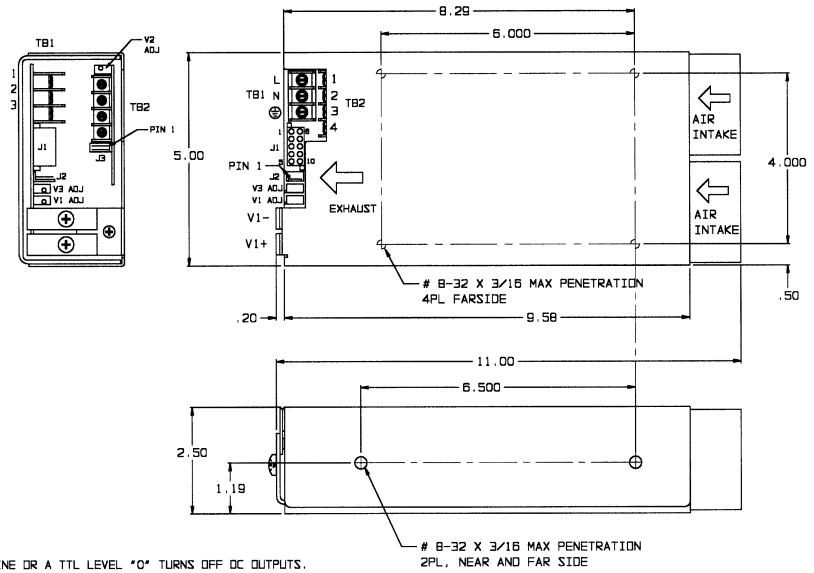
AC INPUT (90-264 VAC CONTINUOUS RANGE)			
FUNCTION	115VAC	230 VAC	CONNECTOR
TB1-1	LINE	LINE 1	BARRIER STRIP
TB1-2	NEUTRAL	LINE 2	#6-32 SCREWS
TB1-3	SAFETY GROUND	SAFETY GROUND	3/8" CENTERS

DC OUTPUTS			
FUNCTION	DESCRIPTION	LOCATION	CONNECTOR
V1	+5V/75A	MAIN OUTPUT	BUS BARS #10-32 SCREWS
	+5V RTN		
V2	+3.3V/40A	TB2-1, 2	BARRIER STRIP #6-32
	+3.3V RTN	TB2-3, 4	SCREWS ON 3/8" CENTERS
V3	+12V/12A-20A PK	J1-4, 5, 10	AMP #770743-1
	+12V RTN	J1-3, 6, 9	MATES WITH CONN
V4	+12V/4A FLOATING	J1-2, 7	#770580-1 WITH
	-12V/4A FLOATING	J1-1, 8	SOCKETS #171639-1 (AWG #20 TO #16)

STATUS AND CONTROL			
FUNCTION	LOCATION	NOTES	CONNECTOR
REMOTE SENSE	J2-1	OUTPUT #1 SENSE	MOLEX #22-04-1041
	J2-2	OUTPUT #1 SENSE RTN	MATES WITH
FAIL	J2-3	REFERENCE TO COMMON	MOLEX #22-01-1044
INHIBIT	J2-4	COMMON	
REMOTE SENSE	J3-1	OUTPUT #2 SENSE	MOLEX #22-04-1021
	J3-2	OUTPUT #2 SENSE RTN	MATES WITH MOLEX #22-01-1024

**NOTES:**

- INHIBIT IS OPEN TO RUN. CONTACT CLOSURE TO THE NEGATIVE SENSE LINE OR A TTL LEVEL \*0\* TURNS OFF DC OUTPUTS.
- FAIL SIGNAL IS A NORMAL LOGIC '1' TTL SIGNAL WHICH GOES LOW UNDER ANY OF THE FOLLOWING CONDITIONS:
  - WHENEVER THE +5V OR THE +3.3V OUTPUT FAILS.
  - WHENEVER THERE IS AN OVER TEMPERATURE CONDITION.
  - WHENEVER THERE IS AN OVER VOLTAGE SHUT DOWN.
  - WHENEVER THERE IS AN AC INPUT FAILURE (5msec WARNING BEFORE OUTPUTS GO OUT OF REGULATION).
- 90-264VAC INPUT POWER FACTOR CORRECTED.
- TOTAL OUTPUT POWER NOT TO EXCEED 600 WATTS.



\* IN PDF FORMAT, PRINT OR  
ZOOM TO SEE DRAWING

<b>Nominal Input Voltage</b>	115-240 VAC, 8A max.
<b>Frequency</b>	47-63 Hz , 400Hz. available.
<b>Operational Input Voltage Range</b>	90-264 VAC Power Factor 0.99 Typical at Full Load. Meets EN 61000-3-2.
<b>Inrush Current</b>	Less than 4 msec. 30 amperes @ 115 VAC or 60 amperes @ 264 VAC.
<b>Brownout Protection:</b>	Holds Regulation to 85 Vac.
<b>Fusing</b>	12 Ampere, 250 VAC, Internal ceramic body fuse.
<b>Hold up time</b>	20msec minimum after loss of AC Input at full load and any input
<b>Efficiency</b>	70% typical
<b>Turn on time</b>	1 sec max. from power up. All output voltages come up within 10msec of each other.
<b>Line and Load Regulation</b>	±2% over AC input range and 0 to 100% load change.
<b>Minimum Load</b>	10% minimum load required on V1 for V2 to Regulate to full load. No minimum load required on V2-V4.
<b>Ripple &amp; Noise</b>	Through 20MHz 1% max. or 100mv whichever is greater for all outputs, peak to peak, with coaxial probe and 0.1uF/10uF capacitors at the connector.
<b>Transient Response</b>	Output maximum excursion of ± 5% for 50% load step. Recovery less than 500 usec.
<b>Overshoot/Undershoot</b>	No turn-on or turn-off overshoot.
<b>Output Isolation</b>	Isolated from chassis ground, 50Vdc.
<b>Input/Output Isolation</b>	2200 VDC from input to both chassis/outputs. SELV construction.
<b>Reverse Voltage</b>	Protected against reverse voltage to supply current rating.
<b>Peak Output Current</b>	Peak current can be delivered for a maximum period of 30 seconds.

<b>Overvoltage Protection</b>	Shutdown at 130% of nominal Vout V1, V2, V3. V4 failsafe design. Recycle input power to reset.
<b>Overtemperature Protection</b>	Unit shuts down if overheated. Recycle AC to reset.
<b>Leakage Current</b>	1.0mA max at 240Vac.
<b>Current Limiting</b>	All outputs short circuit protected with foldback protection. Automatic recovery upon removal of the short.
<b>Paralleling</b>	Two or more supplies can be operated in parallel and will share V1/V2 current to within 10% of each other.
<b>Remote Sense</b>	Compensates for up to 0.5V total distribution voltage drop on the V1 & V2 outputs.
<b>INH</b>	Open to Run, Contact closure to return , turns off all outputs.
<b>FAIL Signal</b>	Normal logic '1' TTL signal which goes low whenever the V1 , V2 outputs fail, an overtemperature condition, an over voltage shut down, or an AC input failure (5msec warning before outputs go out of regulation).
<b>Cooling</b>	Integral fans provide 50cfm of air flow.
<b>Operating Temperature</b>	-40°C to 50°C operating temperature with full load.
<b>Stability</b>	All outputs 0.1% for 8 hrs. after 30 minute warm-up.
<b>Humidity</b>	Up to 95% non-condensing.
<b>Storage Temperature</b>	-40°C to 85°C.
<b>Size</b>	5" x 2.5" x 11" <span style="float: right;"><b>Weight:</b> 6 lbs.</span>
<b>EMC</b>	Meets EN55022 Level A / FCC Class A conducted.
<b>Safety</b>	UL 1950, CSA C22.2 No. 950, EN60950.

SERIES BREAKDOWN: **GNX-600X1-P**  
where X1= S for Single output, D for Dual output, T for Triple output or Q for Quad output

REV: D