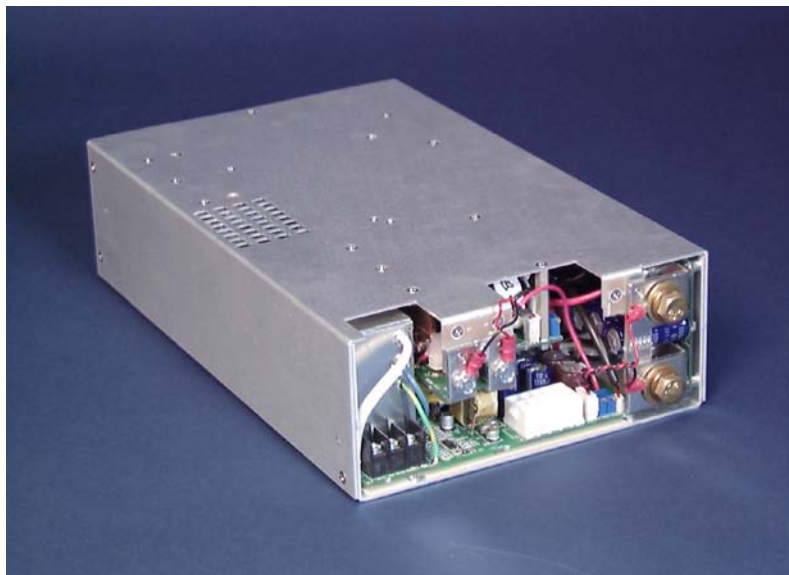


GNX-1500

LOW PROFILE -1500 WATTS

ONE TO FOUR OUTPUTS - POWER FACTOR CORRECTED 90-264 VAC
60 AMP CAPABILITY ON V2 - 300 AMPS ON V1



FEATURES:

- Low Profile 3.38" x 8" x 13" in Size
- One to Four outputs
- Meets EN55022 Level A / FCC Class A
- No Additional Cooling Required up to 50 °C
- Power Factor Corrected Input (90-264VAC)
- Remote Sense On V1, V2 Outputs
- Greater than 150,000 Hrs MTBF
- Zero Wire Current Share on V1 & V2 Outputs

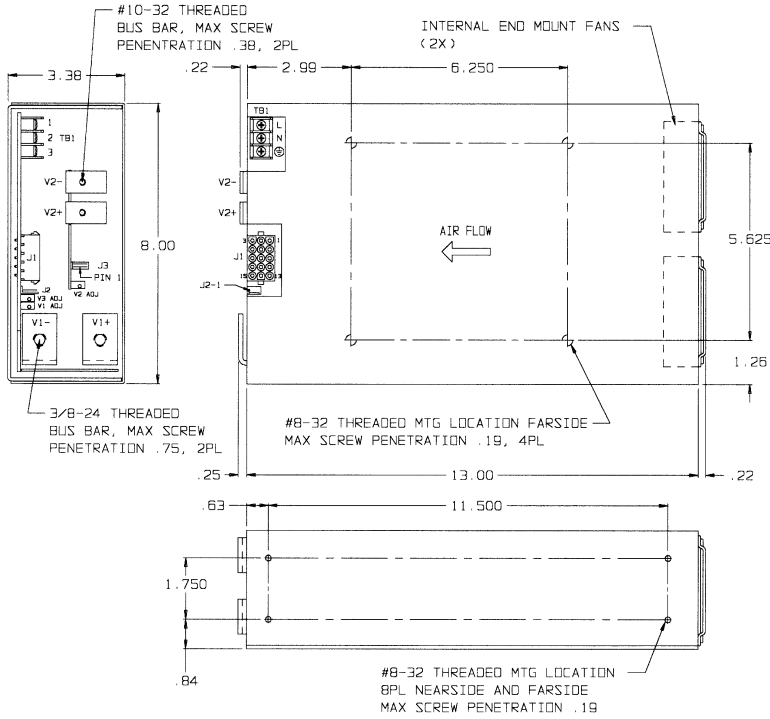
	OUTPUT VOLTAGE (VDC)	OUTPUT AMPERS (MAX)	OUTPUT POWER (WATTS)
V1	1.8 to 48	200/300*	1500/2000**
V2	1.8 to 24	60	480
V3	5 to 24	20/30pk	240
V4	3.3 to 24	10	120

* 300A Single Output Version only

** 2000 Watts available on single output, 230Vac input configurations.
Consult factory for details.

GNX-1500 SERIES

1500 WATT COMPACT SIZE



AC INPUT (90-264 VAC CONTINUOUS RANGE)			
FUNCTION	115VAC	230 VAC	CONNECTOR
TB1-1	LINE	LINE 1	BARRIER STRIP
TB1-2	NEUTRAL	LINE 2	#6-32 SCREWS
TB1-3	SAFETY GROUND	SAFETY GROUND	3/8" CENTERS

DC OUTPUTS			
FUNCTION	DESCRIPTION	LOCATION	CONNECTOR
V1	+5V/200A	V1 OUTPUT	3/8-24 THREADED BUS BARS
V2	+3.3V/50A	V2 OUTPUT	10-32 THREADED BUS BARS
V3	+12V/20A-30A PK	J1-12, 13, 14, 15	AMP MATE-N-LOK
	+12V RTN	J1-7, 8, 9, 10, 11	#350830-1 MATES WITH
V4	+12V/10A FLOATING	J1-1, 2, 3	#950736-1 WITH PINS
	-12V/10A FLOATING	J1-4, 5, 6	

STATUS AND CONTROL			
FUNCTION	LOCATION	NOTES	CONNECTOR
REMOTE SENSE	J2-1	OUTPUT #1 SENSE	MOLEX #22-04-1041
	J2-2	OUTPUT #1 SENSE RTN	MATES WITH
FAIL	J2-3	REFERENCE TO COMMON	MOLEX #22-01-1044
INHIBIT	J2-4	COMMON	
REMOTE SENSE	J3-1	OUTPUT #2 SENSE	MOLEX #22-04-1021
	J3-2	OUTPUT #2 SENSE RTN	MATES WITH MOLEX #22-01-1024

- NOTES:
- INHIBIT IS OPEN TO RUN. CONTACT CLOSURE TO THE NEGATIVE SENSE LINE OR A TTL LEVEL "0" TURNS OFF DC OUTPUTS.
 - FAIL SIGNAL IS A NORMAL LOGIC "1" TTL SIGNAL WHICH GOES LOW UNDER ANY OF THE FOLLOWING CONDITIONS:
 - WHENEVER THE +5V OR THE +3.3V OUTPUT FAILS.
 - WHENEVER THERE IS AN OVER TEMPERATURE CONDITION.
 - WHENEVER THERE IS AN OVER VOLTAGE SHUT DOWN.
 - WHENEVER THERE IS AN AC INPUT FAILURE
 (5msec WARNING BEFORE OUTPUTS GO OUT OF REGULATION).
 - 90-264VAC INPUT POWER FACTOR CORRECTED.
 - TOTAL OUTPUT POWER NOT TO EXCEED 1500 WATTS.

Nominal Input Voltage	115-240 VAC, 20A max.	Overtemperature Protection	Unit shuts down if overheated. Recycle AC to reset.
Frequency	47-63 Hz, 400Hz. available.	Leakage Current	1.5mA max at 240Vac.
Operational Input Voltage Range	90-264 VAC Power Factor 0.98 Typical at Full Load. Meets EN 61000-3-2.	Current Limiting	All outputs short circuit protected with foldback protection. Automatic recovery upon removal of the short.
Inrush Current	Less than 4 msec. 75 amperes @ 115 VAC or 150 amperes @ 264 VAC.	Paralleling	Two or more supplies can be operated in parallel and will share V1/V2 current to within 10% of each other.
Fusing	30 Ampere, 250 VAC, Internal ceramic body fuse.	Remote Sense	Compensates for up to 0.5V total distribution voltage drop on the V1 & V2 outputs.
Hold up time	20msec minimum after loss of AC Input at full load and any input	INH	Open to Run, Contact closure to return , turns off all outputs.
Efficiency	75% typical	FAIL Signal	Normal logic '1' TTL signal which goes low whenever the V1 , V2 outputs fail, an overtemperature condition, an over voltage shut down, or an AC input failure (5msec warning before outputs go out of regulation).
Turn on time	1 sec max. from power up. All output voltages come up within 10msec of each other.	Cooling	Integral fans provide 50cfm of air flow.
Line and Load Regulation	±2% over AC input range and 0 to 100% load change.	Operating Temperature	-40°C to 50°C operating temperature with full load.
Minimum Load	10% minimum load required on V1 for full load regulation on V2.	Stability	All outputs 0.1% for 8 hrs. after 30 minute warm-up.
Ripple & Noise	Through 20MHz 1% max. or 100mv whichever is greater for all outputs, peak to peak, with coaxial probe and 0.1uF/10uF capacitors at the connector.	Humidity	Up to 95% non-condensing.
Transient Response	Output maximum excursion of ± 5% for 50% load step. Recovery less than 500 µsec.	Storage Temperature	-40°C to 85°C.
Overshoot/Undershoot	No turn-on or turn-off overshoot.	Size	8" x 3.38" x 13" Weight: 19 lbs.
Output Isolation	Isolated from chassis ground, 50Vdc.	EMC	Meets EN55022 Level A / FCC Class A conducted.
Input/Output Isolation	2200 VDC from input to both chassis/outputs. SELV construction.	Safety	Meets UL 60950, CSA C22.2 No. 60950, EN60950.
Reverse Voltage	Protected against reverse voltage to supply current rating.		
Overvoltage Protection	Shutdown at 130% of nominal Vout V1, V2, V3. V4 failsafe design. Recycle input power to reset.		

SERIES BREAKDOWN: **GNX-1500X1-P**
 where X1= S for Single output, D for Dual output, T for Triple output or Q for Quad output

REV: D