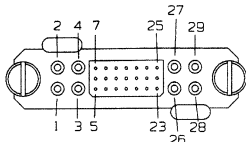


# HOT SWAP RACK MODEL NOC-2BAY-RK

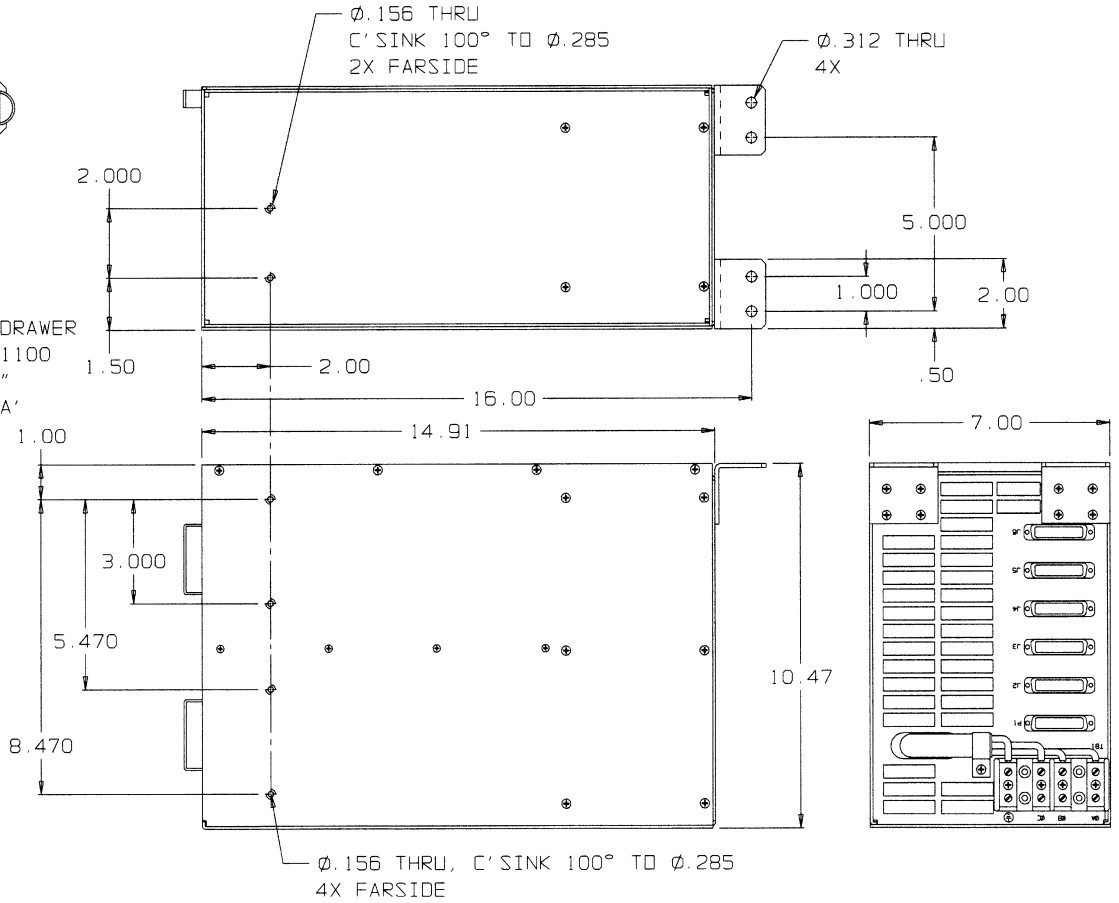
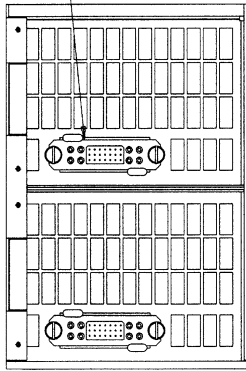


- ◆ 300 WATT HOT SWAP RACK SYSTEM USING TWO **NOC-300Q** MODULES
- ◆ POWER FACTOR CORRECTED INPUT, 187-264VAC THREE PHASE INPUT OPERATION UP TO 15,000 Ft / 65°C AMBIENT
- ◆ LEDS INCLUDED INDICATE INDIVIDUAL POWER SUPPLY STATUS
- ◆ N+1 REDUNDANCY PROVIDED WITH INTEGRAL "ORING" DIODES
- ◆ EASY INPUT / OUTPUT CONNECTIONS PROVIDED
- ◆ THE RACK IS CONFIGURED SUCH THAT A MODULE MUST BE TURNED OFF



DETAIL 'A'  
SCALE: 2/1

ELCON LOWER DRAWER  
P/N 298-10-01100  
"SOCKET SIDE"  
SEE DETAIL 'A'



CONNECTOR P1 PLUG	
PIN #	FUNCTION
1	FLAG_DCDK01
2	FLAG_DCDK02
3	NOT USED
4	NOT USED
5	NOT USED
6	NOT USED
7	NOT USED
8	NOT USED
9	NOT USED
10	NOT USED
11	NOT USED
12	NOT USED
13	NOT USED
14	NOT USED
15	NOT USED
16	NOT USED
17	NOT USED
18	NOT USED
19	NOT USED
20	NOT USED
21	NOT USED
22	FLAG_DCDK01_RTN
23	FLAG_DCDK02_RTN
24	NOT USED
25	NOT USED

CONNECTOR J2 RECEPTACLE	
PIN #	FUNCTION
1	NOT USED
2	NOT USED
3	NOT USED
4	NOT USED
5	NOT USED
6	NOT USED
7	NOT USED
8	NOT USED
9	NOT USED
10	NOT USED
11	NOT USED
12	NOT USED
13	NOT USED
14	NOT USED
15	NOT USED
16	NOT USED
17	NOT USED
18	NOT USED
19	NOT USED
20	NOT USED
21	NOT USED
22	NOT USED
23	NOT USED
24	NOT USED
25	NOT USED

CONNECTOR J3 RECEPTACLE	
PIN #	FUNCTION
1	+5V
2	+5V
3	+5V
4	+5V
5	+5V
6	+5V
7	NOT USED
8	+5V RETURN
9	+5V RETURN
10	+5V RETURN
11	+5V RETURN
12	+5V RETURN
13	+5V RETURN
14	+5V
15	+5V
16	+5V
17	+5V
18	+5V
19	NOT USED
20	NOT USED
21	+5V RETURN
22	+5V RETURN
23	+5V RETURN
24	+5V RETURN
25	+5V RETURN

CONNECTOR J4 RECEPTACLE	
PIN #	FUNCTION
1	+15V
2	+15V
3	+15V
4	+15V
5	+15V
6	+15V
7	NOT USED
8	+15V RETURN
9	+15V RETURN
10	+15V RETURN
11	+15V RETURN
12	+15V RETURN
13	+15V RETURN
14	+15V
15	+15V
16	+15V
17	+15V
18	+15V
19	NOT USED
20	NOT USED
21	+15V RETURN
22	+15V RETURN
23	+15V RETURN
24	+15V RETURN
25	+15V RETURN

CONNECTOR J5 RECEPTACLE	
PIN #	FUNCTION
1	-15V
2	-15V
3	-15V
4	-15V
5	-15V
6	-15V
7	NOT USED
8	-15V RETURN
9	-15V RETURN
10	-15V RETURN
11	-15V RETURN
12	-15V RETURN
13	-15V RETURN
14	-15V
15	-15V
16	-15V
17	-15V
18	-15V
19	NOT USED
20	NOT USED
21	-15V RETURN
22	-15V RETURN
23	-15V RETURN
24	-15V RETURN
25	-15V RETURN

CONNECTOR J6 RECEPTACLE	
PIN #	FUNCTION
1	-26.5V
2	-26.5V
3	-26.5V
4	-26.5V
5	-26.5V
6	-26.5V
7	NOT USED
8	-26.5V RETURN
9	-26.5V RETURN
10	-26.5V RETURN
11	-26.5V RETURN
12	-26.5V RETURN
13	-26.5V RETURN
14	-26.5V
15	-26.5V
16	-26.5V
17	-26.5V
18	-26.5V
19	NOT USED
20	NOT USED
21	-26.5V RETURN
22	-26.5V RETURN
23	-26.5V RETURN
24	-26.5V RETURN
25	-26.5V RETURN

TB1	
PIN #	FUNCTION
1	PHASE A
2	PHASE B
3	PHASE C
4	GROUND

INTERNAL ELCON CONNECTORS "298-10-01100" (SOCKET SIDE)			
PIN #	SIGNAL	PIN #	SIGNAL
1	PHASE A	13	I-SHARE
2	PHASE B	14	-26.5V
3	PHASE C	15	-26.5V
4	CASE GND	16	N/C
5	N/C	17	-15V RTN
6	N/C	18	-15V RTN
7	N/C	19	-15V RTN
8	FLAG_DCDK	20	-15V
9	FLAG_DCDK_RTN	21	-15V
10	N/C	22	-15V
11	-26.5V RTN	23	+5V +SENSE
12	-26.5V RTN	24	+5V -SENSE
		25	N/C
		26	+5V
		27	+5V RTN
		28	+15V
		29	+15V RTN