

# DEC-185P

190 WATT **LOW PROFILE**

POWER FACTOR CORRECTED EN 60555-2 COMPLIANT  
CERTIFIED FOR MEDICAL EQUIPMENT USE PER EN 60601-1

MADE IN THE U.S.A.



**HIGH RELIABILITY GREATER THAN 120,000 HRS. MTBF**



## FEATURES:

- 100 KHz Operation
- Sizes 1.78" x 5.4" x 8.10"
- 70% Efficiency Typical
- Meets EN55022 Level A / FCC Class A
- Universal Input 90-264 VAC
- 5V Auxiliary independent of other outputs
- Meets Safety requirements of IEC 601-1 and IEC-950

	OUTPUT VOLTAGE (VDC)	OUTPUT AMPERS (MAX)
V1	5	18
V2	3.3	16
V3	12	4
V4	-12	0.6
V5	5 AUX.	0.15



3601 VETERANS HIGHWAY  
RONKONKOMA, NEW YORK 11779  
TEL (516) 981-7231 FAX (516) 981-7266

VISIT US ON THE WEB:  
<http://www.switchpwr.com>

# DEC-185P

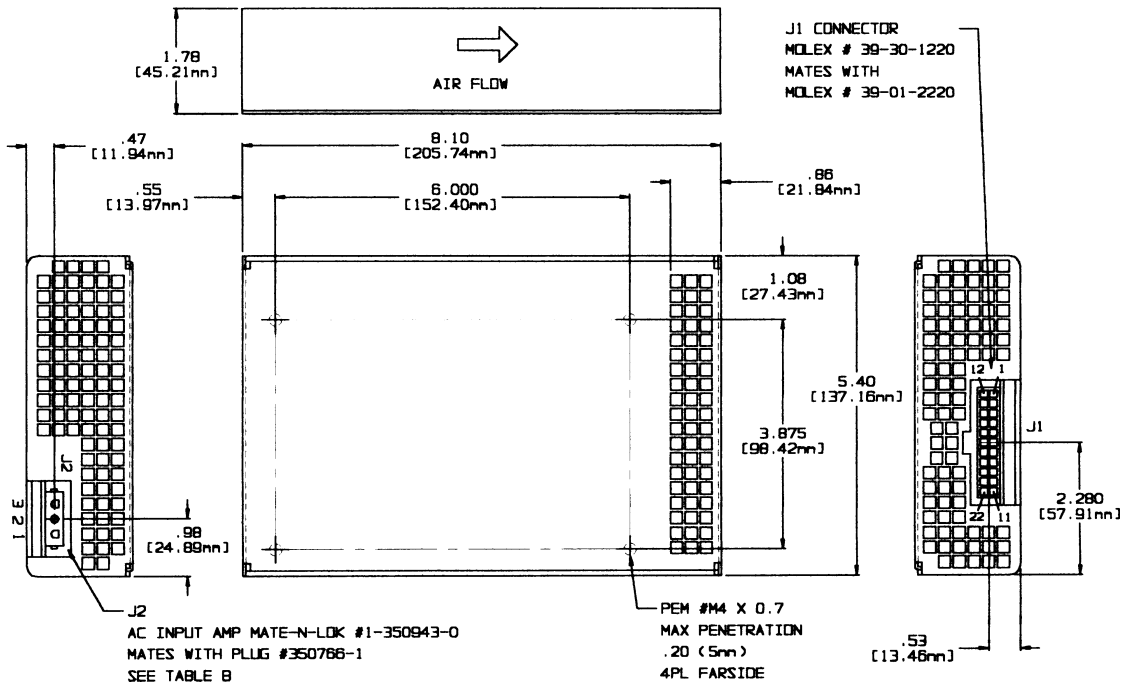
## LOW PROFILE POWER FACTOR CORRECTED 190 WATT

\*IN PDF FORMAT, PRINT OR ZOOM TO SEE DRAWING

TABLE A	
PIN #	SIGNAL
1	+5V/18A
2	+5V/18A
3	RTN
4	RTN
5	+3.3V/16A
6	RTN
7	RTN
8	N/C
9	RTN
10	SHUTDOWN H
11	POK H
12	+5V/18A
13	+5V/18A
14	RTN
15	RTN
16	+3.3V/16A
17	+3.3V/16A
18	N/C
19	N/C
20	+5V AUX/0.15A
21	-12V/0.6A
22	+12V/3.5A

TABLE B	
PIN #	SIGNAL
1	CASE
2	N
3	L



<b>Nominal Input Voltage</b>	115-240 VAC.	<b>Overvoltage Protection</b>	V1 voltage clamp factory set at 20% to 30% above output voltage. V2, V3, V4 failsafe design.
<b>Frequency</b>	47-63 Hz 400Hz. available.	<b>Overtemperature Protection</b>	Unit shuts down if overheated. Automatic recovery.
<b>Operational Input Voltage Range</b>	90 to 264 VAC	<b>Cooling</b>	User provides min 30 CFM.
<b>Inrush Current</b>	Less than 40 A for 4 msec. @ 115 VAC, or 80 amperes @ 230 VAC.	<b>Input/Output Isolation</b>	4242 VDC, SELV construction.
<b>Fusing</b>	6.3 Ampere, 250 VAC, Internal ceramic body fuse.	<b>Remote Sense</b>	Up to 0.5 volts total in load.
<b>Efficiency</b>	70% typical.	<b>V1 Output</b>	
<b>Turn on time</b>	Less than 500 msec.	<b>Shutdown</b>	Standard - Open to run.
<b>Load Regulation</b>	1% for 10% to 100% load changes, all outputs. 10% min. load required on V1 for max load reg. on outputs V2 to V4.	<b>Power OK</b>	Standard - Norm logic "1".
<b>Line Regulation</b>	± 0.5% over operating line range, all outputs.	<b>Operating Temperature</b>	-20°C to 50°C full output. 50°C to 75°C, derate 2%/°C.
<b>Ripple &amp; Noise</b>	1% ripple, 1% noise or 100MV which ever is greater. 20MHz bandwidth.	<b>Stability</b>	All outputs 0.5% for 8 hrs. after 1 hour warm-up.
<b>Transient Response</b>	Output maximum excursion of ± 5% for 25% load step. Recovery less than 500 µsec.	<b>Humidity</b>	Up to 95% non-condensing.
<b>Short Circuit and Overload Protection</b>	All outputs are protected from short circuit and overload. Automatic recovery.	<b>EMI</b>	Meets FCC Class A and EN55022 Level A
<b>Overshoot</b>	No turn-on or turn-off overshoot.	<b>Safety</b>	UL 1950, CSA No. 950, EN 60950 and UL 2601-1, CSA C22.2 No 601-1, EN 60601-1
		<b>Size</b>	1.78" by 5.4 x 8.1".
		<b>Weight</b>	3 lbs.